



**Water Monitoring Result at M5B - Central Cooling Water Intake Group
Mid-Flood Tide**

Date	Time	Weather Condition	Sampling Depth		Water Temperature			pH			Salinity			DO Saturation		DO		Turbidity		Suspended Solids				
					°C		-		ppt		%		mg/L		NTU		mg/L							
			m	Value	Average	Value	Average	Value	Average	Value	Average	Value	Average	Value	Average	Value	Average	Value	Average	Value	Average			
2/11/16	8:00	Fine	Middle	3.5	25.34	25.34	25.34	8.28	8.28	8.27	30.54	30.54	30.50	68.0	68.1	68.0	4.69	4.70	4.69	9.57	9.59	9.59	8	8.00
	8:02		Middle	3.5	25.33	25.33		8.26	8.26		30.46	30.46		68.0	68.0		4.69	4.69		9.60	9.61		8	
4/11/16	8:55	Fine	Middle	3.5	25.25	25.25	25.19	8.25	8.25	8.26	30.32	30.32	30.34	85.5	86.2	86.5	5.96	5.97	6.00	3.57	3.35	3.48	13	<u>14.00</u>
	8:57		Middle	3.5	25.13	25.13		8.26	8.26		30.35	30.35		86.9	87.4		6.03	6.04		3.45	3.56		15	
7/11/16	15:30	Fine	Middle	3.5	26.70	26.70	26.71	8.20	8.20	8.20	30.21	30.21	30.22	81.7	81.7	81.7	5.52	5.52	5.52	5.49	5.47	5.46	7	7.50
	15:32		Middle	3.5	26.72	26.72		8.19	8.19		30.22	30.22		81.7	81.8		5.52	5.53		5.47	5.39		8	
9/11/16	13:56	Cloudy	Middle	3.5	25.28	25.20	27.72	8.25	8.25	8.50	30.16	30.16	30.18	86.6	86.5	86.4	5.99	5.99	5.97	6.32	6.43	6.46	8	7.50
	13:58		Middle	3.5	30.19	30.19		8.74	8.74		30.20	30.20		86.3	86.2		5.98	5.91		6.50	6.58		7	
11/11/16	15:08	Fine	Middle	3.5	24.81	24.81	24.81	8.15	8.15	8.16	30.06	30.06	30.07	79.0	79.1	79.2	5.52	5.52	5.53	7.89	7.89	7.89	11	10.50
	15:10		Middle	3.5	24.80	24.80		8.16	8.16		30.07	30.07		79.2	79.5		5.53	5.56		7.89	7.90		10	
14/11/16	16:50	Fine	Middle	3.5	25.98	25.98	26.00	8.08	8.08	8.09	30.18	30.18	30.17	75.0	75.5	74.8	5.14	5.17	5.12	6.30	6.36	6.34	7	6.50
	16:52		Middle	3.5	26.01	26.01		8.10	8.10		30.16	30.16		74.5	74.1		5.10	5.07		6.35	6.33		6	
16/11/16	7:50	Fine	Middle	4.0	25.32	25.32	25.33	8.19	8.19	8.19	30.26	30.26	30.27	83.9	84.1	84.2	5.81	5.82	5.82	7.89	7.96	7.96	7	7.50
	7:52		Middle	4.0	25.33	25.33		8.18	8.18		30.27	30.27		84.3	84.3		5.83	5.83		7.98	7.99		8	
18/11/16	9:05	Cloudy	Middle	4.0	25.24	25.24	25.25	8.17	8.17	8.18	30.19	30.19	30.20	68.8	68.9	68.9	4.77	4.77	4.78	8.52	8.53	8.55	8	8.00
	9:07		Middle	4.0	25.26	25.26		8.18	8.18		30.20	30.20		68.9	69.0		4.78	4.78		8.55	8.61		8	
21/11/16	13:55	Fine	Middle	4.0	25.37	25.37	25.38	8.09	8.09	8.09	30.34	30.34	30.33	80.7	80.9	81.0	5.58	5.59	5.60	12.67	12.45	12.52	17	<u>17.50</u>
	13:57		Middle	4.0	25.38	25.38		8.09	8.09		30.32	30.32		81.1	81.1		5.60	5.61		12.47	12.48		18	
23/11/16	14:55	Cloudy	Middle	3.5	24.47	24.47	24.43	8.14	8.14	8.14	28.77	28.77	28.80	73.1	73.3	73.5	5.18	5.19	5.21	5.50	5.49	5.50	2	2.00
	14:57		Middle	3.5	24.38	24.38		8.14	8.14		28.83	28.83		73.7	73.9		5.22	5.24		5.49	5.52		2	
25/11/16	15:00	fine	Middle	3.5	24.14	24.14	24.16	8.22	8.22	8.22	30.07	30.07	30.07	74.7	74.9	75.0	5.28	5.30	5.30	4.44	4.44	4.43	8	7.50
	15:02		Middle	3.5	24.18	24.18		8.22	8.22		30.06	30.06		75.1	75.3		5.31	5.32		4.44	4.40		7	
28/11/16	15:00	Fine	Middle	3.5	22.90	22.90	22.90	8.23	8.23	8.23	31.07	31.07	31.07	95.6	95.4	95.3	6.87	6.86	6.85	6.46	6.43	6.41	12	12.00
	15:02		Middle	3.5	22.90	22.90		8.23	8.23		31.07	31.07		95.2	94.9		6.84	6.82		6.38	6.35		12	
30/11/16	17:20	Fine	Middle	4.0	22.60	22.60	22.55	8.22	8.22	8.22	31.13	31.13	31.13	94.2	93.8	92.6	6.81	6.78	6.69	3.32	3.32	3.32	15	<u>14.50</u>
	17:22		Middle	4.0	22.50	22.50		8.22	8.22		31.13	31.13		91.1	91.2		6.58	6.59		3.32	3.31		14	

Remarks:
Single underline denotes exceedance over Action Level.
Double underline denotes exceedance over Limit Level.



**Water Monitoring Result at Culvert J - Reference Station
Mid-Flood Tide**

Date	Time	Weather Condition	Sampling Depth		Water Temperature			pH			Salinity		DO Saturation		DO		Turbidity			Suspended Solids				
					°C		-		ppt		%		mg/L		NTU		mg/L							
			m	Value	Average	Value	Average	Value	Average	Value	Average	Value	Average	Value	Average	Value	Average	Value	Average					
2/11/16	8:05	Fine	Middle	3.5	25.63	25.63	25.55	8.24	8.24	8.24	29.61	29.61	29.63	63.4	63.5	63.3	4.40	4.46	4.41	10.02	10.08	10.07	9	8.00
	8:07		Middle	3.5	25.47	25.47		8.23	8.23		29.64	29.64		63.3	63.0		4.39	4.37		10.09	10.10		7	
4/11/16	8:50	Fine	Middle	3.5	25.15	25.15	24.97	8.27	8.27	8.27	28.96	28.96	28.61	74.3	74.2	74.2	5.21	5.20	5.20	2.63	2.61	2.61	14	13.50
	8:52		Middle	3.5	24.79	24.79		8.26	8.26		28.26	28.26		74.0	74.1		5.20	5.20		2.61	2.60		13	
7/11/16	15:25	Fine	Middle	3.0	26.90	26.90	26.95	8.22	8.22	8.22	30.07	30.07	30.04	76.7	77.7	77.6	5.17	5.24	5.23	5.86	5.90	5.89	7	6.50
	15:27		Middle	3.0	27.00	27.00		8.21	8.21		30.01	30.01		77.9	78.0		5.25	5.25		5.90	5.91		6	
9/11/16	13:52	Cloudy	Middle	3.5	24.98	24.98	24.93	8.28	8.28	8.27	27.92	27.92	28.37	73.1	73.7	73.8	5.16	5.19	5.20	6.93	6.92	6.92	7	7.00
	13:54		Middle	3.5	24.87	24.87		8.26	8.26		28.82	28.82		74.1	74.4		5.20	5.23		6.92	6.92		7	
11/11/16	15:04	Fine	Middle	3.5	24.59	24.59	24.55	8.12	8.12	8.13	29.89	29.89	29.91	75.4	75.4	75.5	5.30	5.30	5.30	6.10	6.10	6.11	8	7.50
	15:06		Middle	3.5	24.50	24.50		8.14	8.14		29.92	29.92		75.5	75.6		5.30	5.31		6.11	6.12		7	
14/11/16	16:46	Fine	Middle	3.5	26.09	26.09	26.17	8.08	8.08	8.09	28.44	28.44	28.42	76.4	76.1	76.0	5.27	5.25	5.24	3.99	4.03	4.01	7	7.00
	16:48		Middle	3.5	26.25	26.25		8.09	8.09		28.40	28.40		75.8	75.5		5.23	5.21		4.01	4.02		7	
16/11/16	7:45	Fine	Middle	3.5	25.28	25.28	25.78	8.22	8.22	8.22	28.70	28.70	28.70	75.8	75.6	75.5	5.29	5.29	5.28	7.82	7.71	7.71	7	6.50
	7:47		Middle	3.5	26.27	26.27		8.21	8.21		28.70	28.70		75.4	75.2		5.27	5.25		7.60	7.69		6	
18/11/16	9:00	Cloudy	Middle	3.5	25.17	25.17	25.15	8.21	8.21	8.21	28.67	28.67	28.69	64.4	63.8	63.9	4.51	4.47	4.47	2.77	2.75	2.73	8	9.00
	9:02		Middle	3.5	25.12	25.12		8.20	8.20		28.70	28.70		63.7	63.5		4.46	4.45		2.73	2.66		10	
21/11/16	13:50	Fine	Middle	3.5	25.36	25.36	25.36	8.08	8.08	8.09	30.39	30.39	30.39	72.5	72.7	72.9	5.01	5.02	5.03	8.63	8.61	8.62	8	8.00
	13:52		Middle	3.5	25.35	25.35		8.09	8.09		30.38	30.38		73.0	73.2		5.04	5.06		8.62	8.60		8	
23/11/16	14:50	Cloudy	Middle	3.5	23.91	23.91	23.91	8.18	8.18	8.18	26.29	26.29	26.30	72.9	72.8	72.7	5.29	5.27	5.27	8.65	8.67	8.67	6	6.00
	14:52		Middle	3.5	23.90	23.90		8.18	8.18		26.30	26.30		72.5	72.6		5.26	5.27		8.67	8.67		6	
25/11/16	14:56	fine	Middle	3.5	24.13	24.13	24.15	8.23	8.23	8.23	30.19	30.19	30.17	73.6	73.6	73.6	5.20	5.20	5.20	5.92	6.00	6.00	6	5.50
	14:58		Middle	3.5	24.17	24.17		8.22	8.22		30.15	30.15		73.5	73.5		5.19	5.19		6.01	6.07		5	
28/11/16	14:56	Fine	Middle	3.5	22.80	22.80	22.80	8.20	8.20	8.21	30.62	30.62	30.62	100.4	100.3	100.2	7.25	7.24	7.23	5.94	5.88	5.87	4	5.00
	14:58		Middle	3.5	22.80	22.80		8.21	8.21		30.62	30.62		100.1	99.9		7.23	7.21		5.79	5.86		6	
30/11/16	17:15	Fine	Middle	3.5	22.60	22.60	22.60	8.20	8.20	8.20	30.96	30.96	30.96	87.2	87.3	87.0	6.30	6.31	6.29	3.50	3.38	3.47	14	14.50
	17:17		Middle	3.5	22.60	22.60		8.20	8.20		30.96	30.96		87.0	86.5		6.29	6.25		3.51	3.48		15	



**Water Monitoring Result at M5B - Central Colling Water Intake Group
Mid-Ebb Tide**

Date	Time	Weather Condition	Sampling Depth		Water Temperature			pH			Salinity			DO Saturation		DO		Turbidity		Suspended Solids				
					°C		-		ppt		%		mg/L		NTU		mg/L							
					Value	Average	Value	Average	Value	Average	Value	Average	Value	Average	Value	Average	Value	Average	Value	Average				
2/11/16	13:45	Fine	Middle	3.5	26.05	26.05	26.05	8.23	8.23	8.24	30.30	30.30	30.31	87.4	87.7	87.8	5.97	5.99	6.00	7.02	7.00	7.00	4	4.50
	13:47		Middle	3.5	26.05	26.05		8.24	8.24		30.31	30.31		87.9	88.2		6.00	6.03		7.00	6.98		5	
4/11/16	5:00	Fine	Middle	3.5	23.60	23.60	23.50	8.09	8.09	8.09	28.66	28.66	28.66	77.9	79.9	78.8	5.63	5.77	5.70	5.40	5.36	5.37	4	4.00
	5:01		Middle	3.5	23.40	23.40		8.09	8.09		28.66	28.66		78.5	79.0		5.67	5.71		5.38	5.34		<2	
7/11/16	5:15	Cloudy	Middle	3.5	25.20	25.20	25.20	8.02	8.02	8.03	31.11	31.11	31.12	74.4	74.2	74.1	5.13	5.12	5.11	4.29	4.30	4.30	4	4.00
	5:16		Middle	3.5	25.20	25.20		8.03	8.03		31.12	31.12		74.6	73.0		5.15	5.04		4.31	4.30		4	
9/11/16	5:00	Cloudy	Middle	3.5	23.00	23.00	23.00	7.98	7.98	7.98	30.38	30.38	30.38	74.0	75.5	75.1	5.33	5.44	5.41	4.53	4.53	4.55	4	5.00
	5:01		Middle	3.5	23.00	23.00		7.98	7.98		30.38	30.38		76.0	74.9		5.46	5.39		4.55	4.57		6	
11/11/16	9:20	Fine	Middle	3.5	23.99	23.99	23.99	8.21	8.21	8.22	29.93	29.93	30.07	91.2	91.8	92.1	6.48	6.50	6.53	7.43	7.41	7.42	8	7.00
	9:22		Middle	3.5	23.98	23.98		8.23	8.23		30.20	30.20		92.5	92.8		6.55	6.58		7.42	7.40		6	
14/11/16	10:44	Fine	Middle	3.5	25.70	25.70	25.71	8.24	8.24	8.24	30.70	30.70	30.45	92.5	93.1	93.5	6.36	6.41	6.45	4.72	4.69	4.73	4	4.50
	10:46		Middle	3.5	25.72	25.72		8.23	8.23		30.20	30.20		94.1	94.1		6.47	6.57		4.75	4.75		5	
16/11/16	13:45	Fine	Middle	3.5	25.64	25.64	25.64	8.17	8.17	8.17	30.47	30.47	30.47	96.8	96.8	96.8	6.66	6.66	6.66	4.11	4.11	4.12	3	3.00
	13:47		Middle	3.5	25.64	25.64		8.17	8.17		30.47	30.47		96.9	96.8		6.66	6.66		4.12	4.12		3	
18/11/16	5:06	Cloudy	Middle	3.0	24.90	24.90	24.85	7.84	7.84	7.85	30.99	30.99	30.99	75.0	75.1	75.2	5.21	5.22	5.22	4.63	4.60	4.64	5	4.50
	5:07		Middle	3.0	24.80	24.80		7.85	7.85		30.99	30.99		75.2	75.3		5.23	5.23		4.65	4.67		4	
21/11/16	5:00	Cloudy	Middle	3.5	24.80	24.80	24.80	8.02	8.02	8.02	31.17	31.17	31.18	81.3	82.0	81.5	5.65	5.70	5.66	4.45	4.39	4.39	5	4.00
	5:01		Middle	3.5	24.80	24.80		8.02	8.02		31.18	31.18		81.6	81.0		5.66	5.63		4.36	4.34		3	
23/11/16	8:15	Cloudy	Middle	3.5	24.33	24.33	24.30	8.16	8.16	8.17	29.57	29.57	29.58	79.5	79.5	79.6	5.62	5.62	5.63	4.76	4.76	4.76	3	2.50
	8:17		Middle	3.5	24.27	24.27		8.17	8.17		29.59	29.59		79.6	79.6		5.63	5.63		4.76	4.77		2	
25/11/16	8:55	Fine	Middle	3.5	23.46	23.46	23.39	8.21	8.21	8.22	29.94	29.94	29.97	74.4	74.8	73.9	5.33	5.36	5.38	6.27	6.19	6.21	9	8.00
	8:57		Middle	3.5	23.31	23.31		8.23	8.23		29.99	29.99		73.1	73.4		5.38	5.46		6.18	6.19		7	
28/11/16	10:40	Fine	Middle	4.0	22.80	22.80	22.80	8.22	8.22	8.22	31.02	31.02	31.03	100.3	100.3	100.3	7.21	7.21	7.21	6.44	6.44	6.45	2	3.00
	10:42		Middle	4.0	22.80	22.80		8.22	8.22		31.03	31.03		100.2	100.4		7.21	7.22		6.45	6.48		4	
1/12/16	2:30	Cloudy	Middle	3.0	20.70	20.70	20.70	8.13	8.13	8.13	30.20	30.20	30.21	82.5	82.4	82.0	6.20	6.17	6.15	5.03	5.06	5.02	5	5.50
	2:31		Middle	3.0	20.70	20.70		8.13	8.13		30.21	30.21		81.3	81.6		6.11	6.13		5.00	4.98		6	

Remarks:
Single underline denotes exceedance over Action Level.
Double underline denotes exceedance over Limit Level.



**Water Monitoring Result at Culvert J - Reference Station
Mid-Ebb Tide**

Date	Time	Weather Condition	Sampling Depth		Water Temperature			pH			Salinity		DO Saturation		DO		Turbidity		Suspended Solids					
					°C		-		ppt		%		mg/L		NTU		mg/L							
					Value	Average	Value	Average	Value	Average	Value	Average	Value	Average	Value	Average	Value	Average	Value	Average				
2/11/16	13:40	Fine	Middle	4	26.01	26.01	26.02	8.23	8.23	8.23	29.72	29.72	29.72	71.3	71.6	71.9	4.89	4.91	4.93	8.34	8.38	8.38	4	4.00
	13:42		Middle	4	26.02	26.02		8.23	8.23		29.71	29.71		71.9	72.7		4.93	4.99		8.39	8.39		4	
4/11/16	5:15	Fine	Middle	3	24.20	24.20	24.15	8.13	8.13	8.10	24.24	24.24	24.24	63.8	64.7	63.7	4.66	4.76	4.67	11.78	11.73	11.70	6	8.50
	5:16		Middle	3	24.10	24.10		8.07	8.07		24.24	24.24		63.5	62.9		4.65	4.60		11.64	11.66		11	
7/11/16	5:30	Cloudy	Middle	3	25.30	25.30	25.30	8.09	8.09	8.09	27.41	27.41	27.41	64.4	64.8	64.3	4.54	4.57	4.54	6.83	6.95	6.95	8	6.50
	5:31		Middle	3	25.30	25.30		8.09	8.09		27.41	27.41		64.1	64.0		4.52	4.52		6.99	7.02		5	
9/11/16	5:08	Cloudy	Middle	3	23.40	23.40	23.40	8.02	8.02	8.01	28.08	28.08	28.08	62.0	62.1	62.0	4.49	4.50	4.49	6.10	6.14	6.16	6	5.50
	5:09		Middle	3	23.40	23.40		8.00	8.00		28.08	28.08		62.3	61.5		4.52	4.46		6.23	6.17		5	
11/11/16	9:15	Fine	Middle	4	23.48	23.48	23.32	8.25	8.25	8.25	27.93	27.93	28.04	78.7	78.7	78.7	5.71	5.72	5.72	8.67	8.44	8.41	8	7.00
	9:17		Middle	4	23.16	23.16		8.24	8.24		28.15	28.15		78.7	78.8		5.72	5.73		8.27	8.25		6	
14/11/16	10:40	Fine	Middle	4	25.70	25.70	25.71	8.25	8.25	8.25	30.09	30.09	30.09	65.8	67.5	69.2	4.52	4.65	4.72	5.65	5.65	5.61	5	4.50
	10:42		Middle	4	25.71	25.71		8.24	8.24		30.08	30.08		70.6	73.0		4.86	4.86		5.60	5.53		4	
16/11/16	13:40	Fine	Middle	4	25.51	25.51	25.51	8.18	8.18	8.18	27.21	27.21	27.18	73.1	73.0	73.1	5.13	5.12	5.13	6.42	6.48	6.44	5	5.00
	13:42		Middle	4	25.51	25.51		8.18	8.18		27.15	27.15		73.1	73.3		5.13	5.14		6.44	6.40		5	
18/11/16	5:15	Cloudy	Middle	3	24.90	24.90	24.90	8.03	8.03	8.02	20.77	20.77	20.76	61.8	62.6	61.8	4.55	4.61	4.56	27.95	28.05	28.05	29	31.50
	5:16		Middle	3	24.90	24.90		8.00	8.00		20.75	20.75		61.6	61.3		4.54	4.52		28.19	28.02		34	
21/11/16	5:10	Cloudy	Middle	3	24.90	24.90	24.90	8.06	8.06	8.05	27.73	27.73	27.73	71.5	72.0	71.8	5.06	5.10	5.08	5.64	5.62	5.63	4	5.00
	5:11		Middle	3	24.90	24.90		8.04	8.04		27.73	27.73		72.0	71.8		5.10	5.07		5.61	5.66		6	
23/11/16	8:10	Cloudy	Middle	4	23.94	23.94	23.92	8.23	8.23	8.22	25.96	25.96	25.97	72.4	73.4	74.5	5.26	5.33	5.41	7.19	7.07	7.09	5	5.00
	8:12		Middle	4	23.90	23.90		8.21	8.21		25.98	25.98		75.4	76.7		5.48	5.58		7.05	7.03		5	
25/11/16	8:50	Fine	Middle	4	22.83	22.83	22.59	8.28	8.28	8.27	26.84	26.84	27.00	73.6	73.0	73.0	5.43	5.40	5.40	8.68	8.72	8.70	5	5.00
	8:52		Middle	4	22.34	22.35		8.26	8.26		27.16	27.16		72.8	72.7		5.39	5.39		8.71	8.68		5	
28/11/16	10:35	Fine	Middle	4	22.80	22.80	22.75	8.18	8.18	8.19	30.17	30.17	30.18	86.0	85.4	85.4	6.23	6.18	6.18	7.85	7.85	7.87	5	4.50
	10:37		Middle	4	22.70	22.70		8.19	8.19		30.18	30.18		85.6	84.5		6.20	6.12		7.89	7.89		4	
1/12/16	2:38	Cloudy	Middle	3	21.00	21.00	20.98	8.24	8.24	8.22	22.04	22.04	22.04	61.8	62.2	61.7	4.85	4.88	4.84	12.60	12.87	12.88	18	16.50
	2:39		Middle	3	20.90	21.00		8.20	8.20		22.03	22.03		61.6	61.3		4.83	4.81		13.07	12.96		15	



**Water Monitoring Result at M5B - Central Cooling Water Intake Group
Mid-Flood Tide**

Date	Time	Weather Condition	Sampling Depth		Water Temperature			pH			Salinity		DO Saturation		DO		Turbidity		Suspended Solids					
					°C		-		ppt		%		mg/L		NTU		mg/L							
			m	Value	Average	Value	Average	Value	Average	Value	Average	Value	Average	Value	Average	Value	Average	Value	Average					
2/12/16	21:11	Cloudy	Middle	3.5	22.40	22.40	22.35	7.80	7.80	7.82	30.99	30.99	31.01	84.0	83.9	83.5	6.10	6.09	6.05	5.22	5.20	5.21	7	6.00
	21:12		Middle	3.5	22.30	22.30		7.83	7.83		31.02	31.02		83.3	82.6		6.03	5.99		5.19	5.23		5	
5/12/16	11:30	Cloudy	Middle	3.5	23.90	23.90	23.90	8.00	7.99	7.99	31.05	31.05	31.05	78.8	79.6	78.6	5.57	5.62	5.55	4.55	4.57	4.53	5	5.00
	11:31		Middle	3.5	23.90	23.90		7.99	7.99		31.05	31.05		78.4	77.7		5.53	5.49		4.52	4.48		5	
7/12/16	10:55	Fine	Middle	4.0	22.00	22.00	22.00	8.12	8.12	8.12	31.12	31.12	31.13	80.6	82.6	81.9	5.88	6.03	5.98	7.36	7.38	7.37	10	10.00
	10:57		Middle	4.0	22.00	22.00		8.12	8.12		31.13	31.13		83.1	81.4		6.07	5.94		7.35	7.38		10	
9/12/16	11:25	Fine	Middle	3.5	22.30	22.30	22.35	8.11	8.11	8.12	30.95	30.95	30.97	84.0	85.7	84.4	6.10	6.21	6.12	1.91	1.86	1.87	13	<u>14.00</u>
	11:27		Middle	3.5	22.40	22.40		8.12	8.12		30.99	30.99		83.3	84.4		6.05	6.12		1.85	1.84		15	
12/12/16	15:25	Fine	Middle	4.0	22.50	22.50	22.55	8.25	8.25	8.25	31.02	31.02	31.02	90.9	92.4	92.0	6.58	6.69	6.66	5.31	5.26	5.27	19	<u>18.00</u>
	15:27		Middle	4.0	22.60	22.60		8.25	8.25		31.02	31.02		92.3	92.5		6.68	6.69		5.28	5.23		17	
14/12/16	16:50	Fine	Middle	3.5	22.70	22.70	22.80	8.20	8.20	8.20	30.94	30.94	30.93	89.8	90.5	88.9	6.46	6.51	6.40	4.34	4.35	4.32	4	3.00
	16:52		Middle	3.5	22.90	22.90		8.19	8.19		30.92	30.92		87.3	88.1		6.28	6.34		4.35	4.25		2	
17/12/16	8:55	Fine	Middle	3.5	19.70	19.70	19.65	8.31	8.31	8.31	30.77	30.77	30.78	89.4	89.8	89.1	6.83	6.87	6.81	5.03	5.15	5.15	6	5.50
	8:57		Middle	3.5	19.60	19.60		8.31	8.31		30.78	30.78		88.3	88.7		6.75	6.78		5.19	5.23		5	
19/12/16	10:35	Fine	Middle	4.0	21.90	21.90	21.90	8.25	8.25	8.25	30.62	30.62	30.62	90.3	90.3	90.4	6.62	6.62	6.62	8.74	8.80	8.78	8	7.00
	10:37		Middle	4.0	21.90	21.90		8.25	8.25		30.62	30.62		90.2	90.6		6.61	6.64		8.78	8.79		6	
21/12/16	13:35	Cloudy	Middle	3.5	21.80	21.80	21.80	8.24	8.24	8.24	30.70	30.70	30.70	87.6	88.5	88.8	6.43	6.50	6.52	5.85	5.83	5.85	5	5.50
	13:37		Middle	3.5	21.80	21.80		8.24	8.24		30.70	30.70		89.3	89.6		6.56	6.58		5.84	5.86		6	
23/12/16	11:25	Fine	Middle	3.5	21.30	21.30	21.35	8.21	8.21	8.21	30.55	30.55	30.55	92.0	92.2	91.8	6.82	6.83	6.80	5.67	5.69	5.62	4	4.50
	11:27		Middle	3.5	21.40	21.40		8.21	8.21		30.55	30.55		91.9	91.1		6.81	6.75		5.61	5.50		5	
26/12/16	18:57	Cloudy	Middle	3.5	21.60	21.60	21.70	7.70	7.70	7.70	30.12	30.12	30.13	84.2	86.1	84.8	6.20	6.35	6.25	3.47	3.25	3.25	5	5.00
	18:58		Middle	3.5	21.80	21.80		7.69	7.69		30.13	30.13		84.7	84.1		6.24	6.19		3.16	3.12		5	
28/12/16	16:20	Cloudy	Middle	4.0	19.60	19.60	19.50	8.33	8.33	8.34	30.59	30.59	30.59	96.1	95.3	95.3	7.37	7.30	7.31	8.86	8.70	8.62	10	10.50
	16:22		Middle	4.0	19.40	19.40		8.34	8.34		30.59	30.59		94.6	95.2		7.27	7.30		8.54	8.39		11	
30/12/16	16:04	Fine	Middle	3.5	19.70	19.70	19.70	8.39	8.39	8.39	30.65	30.65	30.65	93.2	93.2	93.0	7.11	7.11	7.10	3.05	3.09	3.34	5	5.00
	16:06		Middle	3.5	19.70	19.70		8.39	8.39		30.65	30.65		93.1	92.5		7.10	7.06		3.60	3.61		5	

Remarks:
Single underline denotes exceedance over Action Level.
Double underline denotes exceedance over Limit Level.



**Water Monitoring Result at Culvert J - Reference Station
Mid-Flood Tide**

Date	Time	Weather Condition	Sampling Depth		Water Temperature			pH			Salinity		DO Saturation		DO		Turbidity		Suspended Solids					
					°C		-		ppt		%		mg/L		NTU		mg/L							
			m	Value	Average	Value	Average	Value	Average	Value	Average	Value	Average	Value	Average	Value	Average	Value	Average					
2/12/16	21:15	Cloudy	Middle	3.0	22.40	22.40	22.35	7.99	7.99	7.99	28.60	28.60	28.60	70.7	72.6	71.7	5.20	5.34	5.27	7.80	7.74	7.77	5	4.50
	21:16		Middle	3.0	22.30	22.30		7.98	7.98		28.60	28.60		72.2	71.2		5.31	5.24		7.72	7.82		4	
5/12/16	11:45	Cloudy	Middle	3.0	23.60	23.60	23.65	8.06	8.06	8.06	27.79	27.79	27.79	70.8	71.1	70.7	5.11	5.13	5.11	7.68	7.69	7.72	5	6.00
	11:46		Middle	3.0	23.70	23.70		8.05	8.05		27.79	27.79		70.2	70.7		5.07	5.11		7.73	7.79		7	
7/12/16	10:50	Fine	Middle	4.0	21.80	21.80	21.80	8.08	8.08	8.09	31.05	31.05	31.06	73.7	77.8	77.1	5.40	5.70	5.65	9.20	9.16	9.15	12	12.50
	10:52		Middle	4.0	21.80	21.80		8.09	8.09		31.06	31.06		78.6	78.4		5.76	5.74		9.14	9.11		13	
9/12/16	11:20	Fine	Middle	3.5	22.60	22.60	22.70	8.04	8.04	8.05	30.62	30.62	30.63	80.0	80.4	80.6	5.78	5.81	5.82	9.92	9.93	9.92	8	9.00
	11:22		Middle	3.5	22.80	22.80		8.06	8.06		30.63	30.63		80.6	81.5		5.82	5.88		9.93	9.91		10	
12/12/16	15:20	Fine	Middle	4.0	22.50	22.50	22.50	8.23	8.23	8.24	31.00	31.00	30.97	94.5	93.5	93.1	6.82	6.75	6.71	2.34	2.37	2.31	15	13.50
	15:22		Middle	4.0	22.50	22.50		8.24	8.24		30.93	30.93		92.9	91.5		6.69	6.59		2.37	2.16		12	
14/12/16	16:55	Fine	Middle	3.5	22.20	22.20	22.25	8.20	8.20	8.20	30.91	30.91	30.91	89.2	88.2	88.3	6.48	6.41	6.41	4.13	4.23	4.17	3	3.50
	16:57		Middle	3.5	22.30	22.30		8.20	8.20		30.91	30.91		88.1	87.5		6.40	6.35		4.23	4.07		4	
17/12/16	8:50	Fine	Middle	3.5	19.50	19.50	19.50	8.27	8.27	8.27	29.71	29.71	29.72	85.5	85.9	85.2	6.60	6.63	6.58	6.44	6.48	6.48	10	9.50
	8:52		Middle	3.5	19.50	19.50		8.27	8.27		29.73	29.73		85.0	84.5		6.56	6.52		6.50	6.51		9	
19/12/16	10:30	Fine	Middle	4.0	22.30	22.30	22.35	8.15	8.15	8.15	27.71	27.71	27.71	77.0	77.7	77.2	5.70	5.75	5.71	1.68	1.66	1.67	8	7.50
	10:32		Middle	4.0	22.40	22.40		8.15	8.15		27.71	27.71		77.5	76.7		5.73	5.67		1.66	1.67		7	
21/12/16	13:30	Cloudy	Middle	3.5	21.90	21.90	21.90	8.22	8.22	8.22	30.30	30.30	30.30	85.9	86.4	86.2	6.31	6.34	6.33	4.75	4.72	4.74	5	5.00
	13:32		Middle	3.5	21.90	21.90		8.22	8.22		30.29	30.29		86.2	86.1		6.33	6.32		4.73	4.74		5	
23/12/16	11:20	Fine	Middle	3.5	21.30	21.30	21.35	8.11	8.11	8.11	28.86	28.86	28.86	80.0	80.1	79.8	5.98	5.99	5.97	9.05	9.01	9.01	4	4.00
	11:22		Middle	3.5	21.40	21.40		8.11	8.11		28.86	28.86		79.5	79.6		5.95	5.95		9.00	8.99		4	
26/12/16	19:03	Cloudy	Middle	3.0	21.50	21.85	21.64	7.70	7.70	7.71	27.52	27.52	27.52	71.3	72.5	71.6	6.35	6.46	6.38	6.72	6.84	6.78	6	6.50
	19:04		Middle	3.0	21.60	21.60		7.71	7.71		27.52	27.52		71.9	70.8		6.39	6.30		6.80	6.76		7	
28/12/16	16:15	Cloudy	Middle	3.5	19.10	19.10	19.10	8.34	8.34	8.34	30.13	30.13	30.24	91.6	91.3	91.5	7.07	7.05	7.06	5.83	5.90	5.88	3	4.00
	16:17		Middle	3.5	19.10	19.10		8.34	8.34		30.35	30.35		91.5	91.4		7.07	7.06		5.99	5.80		5	
30/12/16	16:00	Fine	Middle	3.5	19.80	19.80	19.80	8.38	8.38	8.38	30.67	30.67	30.66	93.1	93.0	92.7	7.09	7.08	7.05	3.25	3.07	3.09	5	4.00
	16:02		Middle	3.5	19.80	19.80		8.38	8.38		30.65	30.65		92.5	92.0		7.04	7.00		3.04	3.01		3	



**Water Monitoring Result at M5B - Central Colling Water Intake Group
Mid-Ebb Tide**

Date	Time	Weather Condition	Sampling Depth		Water Temperature			pH			Salinity		DO Saturation		DO		Turbidity		Suspended Solids					
					°C		-		ppt		%		mg/L		NTU		mg/L							
					Value	Average	Value	Average	Value	Average	Value	Average	Value	Average	Value	Average	Value	Average	Value	Average				
3/12/16	23:10	Cloudy	Middle	3.5	22.30	22.30	22.30	8.09	8.09	8.10	31.17	31.17	31.17	83.3	84.1	82.9	6.08	6.11	6.03	5.03	5.04	5.07	5	4.50
	23:11		Middle	3.5	22.30	22.30		8.11	8.11		31.17	31.17		82.1	82.2		5.96	5.97		5.10	5.12		4	
5/12/16	6:10	Cloudy	Middle	3.0	22.80	22.80	22.85	7.84	7.84	7.84	30.67	30.67	30.67	68.2	70.5	69.4	4.91	5.08	4.99	4.23	4.21	4.27	4	4.00
	6:11		Middle	3.0	22.90	22.90		7.84	7.84		30.67	30.67		70.1	68.6		5.02	4.94		4.29	4.36		4	
7/12/16	6:26	Fine	Middle	3.5	20.70	20.70	20.65	8.09	8.09	8.09	28.54	28.54	28.54	68.9	69.2	69.0	5.24	5.25	5.23	3.84	3.89	3.59	4	3.50
	6:27		Middle	3.5	20.60	20.60		8.08	8.08		28.54	28.54		68.8	68.9		5.23	5.20		3.34	3.28		3	
9/12/16	6:35	Fine	Middle	3.5	20.30	20.30	20.25	7.99	7.99	7.99	30.95	30.95	30.95	83.6	84.2	84.3	6.33	6.36	6.37	3.96	3.99	4.08	6	5.50
	6:36		Middle	3.5	20.20	20.20		7.99	7.99		30.95	30.95		84.8	84.4		6.40	6.37		4.14	4.22		5	
12/12/16	10:40	Fine	Middle	3.5	22.30	22.30	22.30	8.31	8.31	8.31	31.05	31.05	31.05	89.2	91.2	91.3	6.48	6.63	6.63	3.95	3.99	4.03	8	8.50
	10:42		Middle	3.5	22.30	22.30		8.31	8.31		31.04	31.04		92.7	92.1		6.73	6.69		4.07	4.09		9	
14/12/16	11:29	Fine	Middle	3.5	22.00	22.00	22.05	8.29	8.29	8.29	30.90	30.90	30.90	92.0	91.3	90.4	6.71	6.66	6.60	4.76	4.77	4.79	4	3.50
	11:31		Middle	3.5	22.10	22.10		8.29	8.29		30.90	30.90		89.6	88.7		6.54	6.47		4.81	4.82		3	
17/12/16	0:53	Fine	Middle	3.5	18.80	18.80	18.70	7.86	7.86	7.88	30.58	30.58	30.58	81.1	80.8	80.9	6.33	6.30	6.31	3.37	3.58	3.62	5	4.50
	0:54		Middle	3.5	18.60	18.60		7.90	7.89		30.58	30.58		80.7	81.0		6.29	6.32		3.83	3.70		4	
19/12/16	6:25	Fine	Middle	3.5	20.20	20.20	20.20	7.97	7.97	7.97	30.68	30.68	30.68	81.9	82.3	81.6	6.20	6.23	6.18	3.06	3.20	3.21	5	5.50
	6:26		Middle	3.5	20.20	20.20		7.97	7.97		30.68	30.68		81.1	81.0		6.14	6.13		3.29	3.30		6	
21/12/16	5:52	Cloudy	Middle	3.0	21.80	21.80	21.80	7.93	7.93	7.95	30.45	30.45	30.46	78.2	79.5	77.3	5.74	5.84	5.66	4.23	4.02	4.01	4	3.50
	5:53		Middle	3.0	21.80	21.80		7.96	7.96		30.46	30.46		76.0	75.4		5.53	5.54		3.98	3.79		3	
23/12/16	0:05	Cloudy	Middle	3.0	19.80	19.80	19.80	7.66	7.66	7.66	30.42	30.42	30.42	81.2	81.5	81.1	6.20	6.22	6.19	4.48	4.45	4.43	6	5.50
	0:06		Middle	3.0	19.80	19.80		7.66	7.66		30.42	30.42		81.4	80.3		6.21	6.13		4.41	4.38		5	
26/12/16	21:02	Cloudy	Middle	3.5	20.10	20.10	20.05	8.16	8.16	8.17	30.82	30.82	30.77	83.4	85.7	84.8	6.83	7.03	6.95	2.85	2.81	2.74	5	5.00
	21:03		Middle	3.5	20.00	20.00		8.17	8.17		30.72	30.72		85.1	85.0		6.97	6.97		2.59	2.72		5	
29/12/16	3:03	Cloudy	Middle	3.0	18.30	18.20	18.23	7.61	7.61	7.62	23.31	23.31	23.31	60.4	60.8	60.5	4.97	5.00	4.98	14.34	14.36	14.33	6	6.00
	3:04		Middle	3.0	18.20	18.20		7.62	7.62		23.31	23.31		60.2	60.5		4.96	4.98		14.32	14.30		6	
31/12/16	3:50	Cloudy	Middle	3.0	18.60	18.60	18.55	7.77	7.77	7.78	30.14	30.14	30.17	82.7	83.0	82.3	6.48	6.50	6.44	4.35	4.28	4.25	5	5.50
	3:51		Middle	3.0	18.50	18.50		7.78	7.78		30.20	30.19		81.0	82.3		6.34	6.45		4.20	4.18		6	

Remarks:
Single underline denotes exceedance over Action Level.
Double underline denotes exceedance over Limit Level.



**Water Monitoring Result at Culvert J - Reference Station
Mid-Ebb Tide**

Date	Time	Weather Condition	Sampling Depth		Water Temperature			pH			Salinity			DO Saturation			DO			Turbidity			Suspended Solids	
					°C		-		ppt		%		mg/L		NTU		mg/L							
					Value	Average	Value	Average	Value	Average	Value	Average	Value	Average	Value	Average	Value	Average	Value	Average				
3/12/16	23:15	Cloudy	Middle	3	22.40	22.40	22.40	8.13	8.13	8.12	29.41	29.41	29.41	70.7	71.1	70.9	5.17	5.21	5.19	7.32	7.30	7.29	2	3.00
	23:16		Middle	3	22.40	22.40		8.10	8.10		29.41	29.41		71.1	70.5		5.20	5.16		7.28	7.26		4	
5/12/16	6:15	Cloudy	Middle	3	22.90	22.90	22.90	7.93	7.93	7.92	27.66	27.66	27.66	60.3	61.1	60.5	4.43	4.48	4.43	7.35	7.30	7.25	7	7.00
	6:16		Middle	3	22.90	22.90		7.91	7.91		27.66	27.66		60.5	60.0		4.43	4.39		7.19	7.16		7	
7/12/16	6:32	Fine	Middle	3	21.10	21.10	21.10	8.05	8.05	8.03	26.42	26.42	26.42	47.8	48.8	48.7	3.65	3.73	3.73	11.22	11.35	10.95	6	7.00
	6:33		Middle	3	21.10	21.10		8.01	8.01		26.42	26.42		49.2	49.1		3.76	3.76		10.57	10.66		8	
9/12/16	6:42	Fine	Middle	3	20.30	20.30	20.25	8.07	8.07	8.05	26.90	26.90	26.90	74.1	74.9	74.4	5.72	5.78	5.74	3.30	3.31	3.30	4	5.00
	6:43		Middle	3	20.20	20.20		8.02	8.02		26.90	26.90		74.6	73.9		5.74	5.71		3.28	3.32		6	
12/12/16	10:35	Fine	Middle	4	22.30	22.30	22.35	8.30	8.30	8.30	30.99	30.99	30.99	91.6	92.5	91.5	6.64	6.79	6.65	3.80	3.79	3.77	5	6.00
	10:37		Middle	4	22.40	22.40		8.30	8.30		30.98	30.98		91.0	90.7		6.59	6.57		3.75	3.74		7	
14/12/16	11:25	Fine	Middle	4	22.20	22.20	22.20	8.19	8.19	8.19	29.21	29.21	29.21	84.5	84.4	83.6	6.20	6.19	6.13	8.43	8.23	8.09	8	7.50
	11:27		Middle	4	22.20	22.20		8.19	8.19		29.21	29.21		83.3	82.1		6.11	6.02		7.90	7.80		7	
17/12/16	1:06	Fine	Middle	4	18.90	18.90	18.90	7.94	7.94	7.94	24.88	24.88	24.88	62.6	64.6	62.8	5.02	5.18	5.04	9.58	9.68	9.73	8	8.00
	1:07		Middle	4	18.90	18.90		7.94	7.94		24.87	24.87		62.9	61.2		5.05	4.91		9.84	9.82		8	
19/12/16	6:31	Fine	Middle	3	20.00	20.00	20.00	7.90	7.90	7.90	26.29	26.29	26.30	42.2	43.0	42.4	3.29	3.35	3.30	7.30	7.28	7.21	12	12.00
	6:32		Middle	3	20.00	20.00		7.89	7.89		26.30	26.30		42.2	42.0		3.29	3.26		7.16	7.10		12	
21/12/16	6:05	Cloudy	Middle	3	21.70	21.70	21.70	7.98	7.98	7.98	27.98	27.98	27.98	64.0	64.8	64.2	4.78	4.84	4.80	3.60	3.62	3.57	4	4.00
	6:06		Middle	3	21.70	21.70		7.97	7.97		27.97	27.98		64.1	63.8		4.79	4.77		3.64	3.41		4	
23/12/16	0:13	Cloudy	Middle	3	19.70	19.70	19.65	7.71	7.71	7.71	28.07	28.07	28.08	47.2	48.0	47.8	3.66	3.72	3.71	5.79	5.85	5.76	8	8.00
	0:14		Middle	3	19.60	19.60		7.70	7.70		28.08	28.08		48.2	47.9		3.74	3.71		5.73	5.66		8	
26/12/16	21:11	Cloudy	Middle	3	20.50	20.50	20.50	8.22	8.22	8.22	26.24	26.24	26.24	72.6	74.1	74.0	6.17	6.29	6.29	4.68	4.66	4.45	7	6.00
	21:12		Middle	3	20.50	20.50		8.21	8.22		26.24	26.24		74.9	74.5		6.37	6.33		4.28	4.18		5	
29/12/16	3:10	Cloudy	Middle	3	19.30	19.30	19.30	7.62	7.62	7.62	25.77	25.77	25.77	53.5	54.5	54.1	4.28	4.34	4.32	14.42	14.37	14.38	14	14.50
	3:11		Middle	3	19.30	19.30		7.62	7.62		25.77	25.77		54.4	54.1		4.33	4.31		14.37	14.34		15	
31/12/16	3:54	Cloudy	Middle	3	18.90	18.90	18.90	7.98	7.97	7.96	26.20	26.20	26.20	48.0	48.4	48.2	3.83	3.85	3.84	10.17	10.22	10.29	7	8.50
	3:55		Middle	3	18.90	18.90		7.95	7.95		26.20	26.20		48.3	48.2		3.85	3.84		10.34	10.43		10	



**Water Monitoring Result at M5B - Central Cooling Water Intake Group
Mid-Flood Tide**

Date	Time	Weather Condition	Sampling Depth		Water Temperature			pH			Salinity		DO Saturation		DO		Turbidity		Suspended Solids					
					°C		-		ppt		%		mg/L		NTU		mg/L							
			m	Value	Average	Value	Average	Value	Average	Value	Average	Value	Average	Value	Average	Value	Average	Value	Average					
3/1/17	10:29	Fine	Middle	3.5	20.40	20.40	20.45	8.33	8.33	8.33	30.49	30.49	30.49	91.1	90.1	90.7	6.91	6.85	6.86	4.46	4.46	4.45	7	7.00
	10:31		Middle	3.5	20.50	20.50		8.33	8.33		30.48	30.48		91.1	90.3		6.87	6.80		4.45	4.44		7	
5/1/17	10:45	Cloudy	Middle	3.5	21.00	21.00	21.00	8.30	8.30	8.31	30.29	30.29	30.31	89.0	90.7	90.7	6.65	6.77	6.77	2.88	2.81	2.82	4	4.50
	10:47		Middle	3.5	21.00	21.00		8.31	8.31		30.32	30.32		91.7	91.4		6.84	6.82		2.80	2.78		5	
7/1/17	10:35	Fine	Middle	3.5	21.00	21.00	21.10	8.28	8.28	8.28	30.49	30.49	30.49	93.0	93.7	93.4	6.94	6.97	6.95	4.63	4.55	4.57	6	6.00
	10:37		Middle	3.5	21.20	21.20		8.28	8.28		30.49	30.49		93.8	93.0		6.97	6.92		4.55	4.55		6	
9/1/17	14:00	Fine	Middle	4.0	21.00	21.00	21.05	8.28	8.28	8.28	30.42	30.42	30.42	93.5	94.1	93.5	6.96	7.03	6.97	4.39	4.42	4.41	23	<u>24.00</u>
	14:02		Middle	4.0	21.10	21.10		8.28	8.28		30.42	30.42		93.4	93.1		6.96	6.94		4.41	4.43		25	
11/1/17	15:25	Cloudy	Middle	3.5	20.20	20.20	20.20	8.35	8.35	8.35	30.71	30.71	30.71	90.9	91.5	91.7	6.88	6.92	6.94	2.82	2.83	2.85	4	4.00
	15:27		Middle	3.5	20.20	20.20		8.35	8.35		30.71	30.71		92.3	92.1		6.98	6.97		2.86	2.87		4	
13/1/17	16:10	Rainy	Middle	3.5	19.30	19.30	19.25	8.35	8.35	8.36	30.65	30.65	30.66	92.2	92.4	92.2	7.09	7.10	7.09	7.69	7.69	7.69	12	11.00
	16:12		Middle	3.5	19.20	19.20		8.36	8.36		30.66	30.66		92.3	92.0		7.10	7.08		7.69	7.70		10	
16/1/17	8:35	Cloudy	Middle	3.5	18.60	18.60	18.55	8.35	8.35	8.35	30.53	30.53	30.53	91.1	92.0	92.5	7.11	7.18	7.21	4.23	4.23	4.23	4	4.00
	8:36		Middle	3.5	18.50	18.50		8.35	8.35		30.53	30.53		93.2	93.7		7.27	7.29		4.23	4.22		4	
18/1/17	10:27	Cloudy	Middle	3.5	19.40	19.40	19.50	8.31	8.31	8.31	30.59	30.59	30.60	92.1	92.1	91.5	7.11	7.08	7.03	4.21	4.21	4.19	4	4.00
	10:29		Middle	3.5	19.60	19.60		8.31	8.31		30.61	30.61		91.3	90.4		7.00	6.93		4.19	4.13		4	
20/1/17	10:25	Fine	Middle	3.5	19.50	19.50	19.55	8.11	8.11	8.11	30.33	30.33	30.33	81.3	81.9	81.5	6.23	6.28	6.25	8.05	8.06	8.06	10	9.50
	10:27		Middle	3.5	19.60	19.60		8.11	8.11		30.33	30.33		81.4	81.2		6.24	6.23		8.06	8.07		9	
23/1/17	15:30	Fine	Middle	3.5	19.00	19.00	19.05	8.01	8.01	8.06	31.08	31.08	31.08	87.8	87.0	86.9	6.75	6.70	6.69	4.55	4.34	4.38	4	4.00
	15:32		Middle	3.5	19.10	19.10		8.10	8.10		31.08	31.08		87.3	85.5		6.77	6.55		4.32	4.32		4	
25/1/17	14:25	Fine	Middle	3.5	20.00	20.00	20.10	8.09	8.09	8.10	31.00	31.00	31.00	88.2	88.8	88.2	6.67	6.70	6.66	3.27	3.22	3.20	5	5.50
	14:27		Middle	3.5	20.20	20.20		8.11	8.11		30.99	30.99		87.8	87.8		6.63	6.63		3.17	3.13		6	
27/1/17	17:58	Fine	Middle	3.5	19.10	19.10	19.10	8.01	8.01	8.03	30.99	30.99	30.99	79.3	79.0	78.8	6.11	6.09	6.08	4.42	4.42	4.39	7	6.00
	18:00		Middle	3.5	19.10	19.10		8.05	8.05		30.99	30.99		78.8	78.2		6.07	6.03		4.36	4.35		5	

Remarks:
Single underline denotes exceedance over Action Level.
Double underline denotes exceedance over Limit Level.



**Water Monitoring Result at Culvert J - Reference Station
Mid-Flood Tide**

Date	Time	Weather Condition	Sampling Depth		Water Temperature			pH			Salinity		DO Saturation		DO		Turbidity		Suspended Solids					
					°C			-			ppt		%		mg/L		NTU		mg/L					
			m	Value	Average	Value	Average	Value	Average	Value	Average	Value	Average	Value	Average	Value	Average	Value	Average	Value	Average			
3/1/17	10:25	Fine	Middle	3.5	20.50	20.50	20.60	8.32	8.32	8.32	30.29	30.29	30.27	89.7	88.1	88.8	6.74	6.67	6.69	4.67	4.66	4.66	5	5.50
	10:27		Middle	3.5	20.70	20.70		8.32	8.32		30.25	30.25		88.9	88.5		6.68	6.65		4.65	4.65		6	
5/1/17	10:40	Cloudy	Middle	3.5	21.30	21.30	21.35	8.21	8.21	8.21	27.62	27.62	27.62	78.7	79.3	78.7	5.93	5.97	5.93	9.07	9.08	9.10	7	8.00
	10:42		Middle	3.5	21.40	21.40		8.21	8.21		27.62	27.62		78.4	78.3		5.91	5.90		9.11	9.12		9	
7/1/17	10:30	Fine	Middle	3.5	21.40	21.40	21.50	8.26	8.26	8.27	30.50	30.50	30.50	90.4	90.1	89.8	6.69	6.66	6.64	4.21	4.22	4.17	8	7.00
	10:32		Middle	3.5	21.60	21.60		8.27	8.27		30.49	30.49		89.7	88.9		6.63	6.57		4.15	4.09		6	
9/1/17	13:55	Fine	Middle	3.5	21.30	21.30	21.40	8.27	8.27	8.27	30.32	30.32	30.32	89.4	90.2	89.9	6.63	6.68	6.67	2.39	2.40	2.42	5	6.00
	13:57		Middle	3.5	21.50	21.50		8.27	8.27		30.32	30.32		90.5	89.3		6.70	6.67		2.43	2.44		7	
11/1/17	15:20	Cloudy	Middle	3.5	20.20	20.20	20.20	8.34	8.34	8.34	30.70	30.70	30.70	91.4	92.3	92.0	6.91	6.97	6.96	3.65	3.50	3.54	3	3.00
	15:22		Middle	3.5	20.20	20.20		8.34	8.34		30.70	30.70		92.6	91.8		7.00	6.94		3.49	3.51		3	
13/1/17	16:05	Rainy	Middle	3.5	19.20	19.20	19.15	8.32	8.32	8.32	29.84	29.84	29.85	85.0	85.4	85.4	6.59	6.62	6.62	9.74	9.71	9.74	12	11.50
	16:07		Middle	3.5	19.10	19.10		8.32	8.32		29.85	29.85		85.8	85.2		6.65	6.60		9.71	9.80		11	
16/1/17	8:30	Cloudy	Middle	3.5	18.50	18.50	18.45	8.33	8.33	8.33	30.08	30.08	30.08	88.9	88.6	86.3	6.97	6.95	6.95	4.48	4.49	4.51	4	3.50
	8:32		Middle	3.5	18.40	18.40		8.33	8.33		30.08	30.08		88.7	78.9		6.96	6.90		4.52	4.53		3	
18/1/17	10:23	Cloudy	Middle	3.5	19.60	19.60	19.65	8.29	8.29	8.29	30.57	30.57	30.56	91.0	90.1	89.6	6.95	6.89	6.85	4.06	4.06	4.06	2	2.00
	10:25		Middle	3.5	19.70	19.70		8.29	8.29		30.54	30.54		89.1	88.2		6.81	6.74		4.06	4.07		2	
20/1/17	10:20	Fine	Middle	3.5	19.50	19.50	19.60	8.09	8.90	8.32	27.85	27.85	27.86	71.0	71.5	70.9	5.52	5.56	5.53	12.42	12.42	12.43	9	10.00
	10:22		Middle	3.5	19.70	19.70		8.15	8.15		27.86	27.86		71.2	69.9		5.53	5.49		12.42	12.46		11	
23/1/17	15:35	Fine	Middle	3.5	18.90	18.90	18.90	8.15	8.15	8.16	30.87	30.87	30.87	85.2	85.1	85.1	6.60	6.60	6.60	4.74	4.80	4.79	4	3.00
	15:37		Middle	3.5	18.90	18.90		8.17	8.17		30.87	30.87		85.1	85.0		6.59	6.59		4.80	4.80		2	
25/1/17	14:20	Fine	Middle	3.5	20.40	20.40	20.55	7.98	7.98	7.99	31.05	31.05	31.03	88.1	89.1	88.4	6.61	6.68	6.62	3.36	3.36	3.37	2	2.00
	14:22		Middle	3.5	20.70	20.70		7.99	7.99		31.00	31.00		88.7	87.6		6.64	6.56		3.38	3.39		<2	
27/1/17	17:54	Fine	Middle	3.5	19.30	19.30	19.40	7.91	7.91	7.95	31.20	31.20	31.15	79.9	80.6	80.2	8.11	8.15	8.13	3.90	3.89	3.89	4	3.00
	17:56		Middle	3.5	19.50	19.50		7.98	7.98		31.09	31.09		80.6	79.7		8.18	8.09		3.88	3.87		2	



**Water Monitoring Result at M5B - Central Colling Water Intake Group
Mid-Ebb Tide**

Date	Time	Weather Condition	Sampling Depth		Water Temperature		pH		Salinity		DO Saturation		DO		Turbidity		Suspended Solids							
					°C		-		ppt		%		mg/L		NTU		mg/L							
			m	Value	Average	Value	Average	Value	Average	Value	Average	Value	Average	Value	Average	Value	Average	Value	Average					
3/1/17	4:25	Fine	Middle	3.0	19.90	19.90	19.85	7.91	7.91	7.93	30.31	30.31	30.33	82.1	82.5	82.1	6.26	6.29	6.26	2.88	2.66	2.75	5	5.50
	4:26		Middle	3.0	19.80	19.80		7.95	7.95		30.34	30.34		82.2	81.7		6.27	6.23		2.77	2.69		6	
5/1/17	4:20	Cloudy	Middle	3.5	20.20	20.20	20.25	7.66	7.66	7.65	30.30	30.30	30.31	82.6	82.5	81.9	6.24	6.23	6.18	3.66	3.70	3.68	3	3.50
	4:21		Middle	3.5	20.30	20.30		7.64	7.64		30.31	30.31		81.0	81.3		6.12	6.14		3.77	3.58		4	
7/1/17	5:20	Cloudy	Middle	3.5	20.40	20.40	20.45	7.75	7.75	7.78	30.21	30.21	30.21	80.4	81.5	80.5	6.06	6.13	6.07	2.30	2.10	2.15	5	4.50
	5:21		Middle	3.5	20.50	20.50		7.81	7.81		30.21	30.21		80.0	80.1		6.03	6.04		2.15	2.06		4	
9/1/17	21:20	Cloudy	Middle	3.5	20.40	20.40	20.45	7.79	7.80	7.81	30.56	30.56	30.56	82.3	83.9	83.2	6.18	6.30	6.25	3.74	3.52	3.47	5	5.50
	21:21		Middle	3.5	20.50	20.50		7.82	7.82		30.56	30.56		83.6	83.0		6.29	6.24		3.39	3.22		6	
11/1/17	1:10	Cloudy	Middle	3.5	19.80	19.80	19.85	8.05	8.05	8.06	30.68	30.68	30.68	82.9	82.8	83.0	6.30	6.29	6.31	3.09	3.11	3.09	14	10.50
	1:11		Middle	3.5	19.90	19.90		8.07	8.07		30.68	30.68		83.0	83.1		6.31	6.32		3.02	3.15		7	
14/1/17	1:05	#REF!	Middle	3.5	18.50	18.50	18.45	7.64	7.64	7.69	30.54	30.54	30.54	79.9	80.5	79.9	6.26	6.31	6.26	2.27	2.40	2.34	6	8.00
	1:06		Middle	3.5	18.40	18.40		7.74	7.74		30.54	30.54		79.5	79.7		6.23	6.24		2.39	2.30		10	
16/1/17	4:43	Cloudy	Middle	3.0	17.80	17.80	17.75	7.93	7.93	7.95	30.51	30.51	30.51	79.7	79.1	79.1	6.32	6.27	6.27	3.94	3.87	3.90	8	8.00
	4:44		Middle	3.0	17.70	17.70		7.97	7.97		30.51	30.51		78.9	78.7		6.25	6.25		3.90	3.89		8	
18/1/17	5:25	Cloudy	Middle	3.5	19.00	19.00	19.00	8.01	8.01	8.02	30.65	30.65	30.65	79.5	79.9	80.1	6.14	6.17	6.18	3.44	3.42	3.30	8	9.00
	5:26		Middle	3.5	19.00	19.00		8.02	8.02		30.65	30.65		79.9	80.9		6.17	6.25		3.13	3.20		10	
20/1/17	6:35	Cloudy	Middle	3.0	18.30	18.30	18.35	8.24	8.24	8.23	27.40	27.40	27.40	86.6	87.1	87.0	6.90	6.94	6.93	4.20	4.01	4.10	10	8.50
	6:36		Middle	3.0	18.40	18.40		8.22	8.21		27.40	27.40		87.0	87.2		6.93	6.95		4.12	4.05		7	
23/1/17	21:42	Cloudy	Middle	3.5	18.40	18.40	18.45	8.37	8.37	8.38	31.18	31.18	31.18	92.8	92.0	91.8	7.23	7.16	7.15	3.31	3.29	3.27	8	7.00
	21:43		Middle	3.5	18.50	18.50		8.38	8.38		31.18	31.18		92.2	90.3		7.18	7.03		3.25	3.22		6	
25/1/17	1:13	Fine	Middle	3.0	18.20	18.20	18.25	8.10	8.10	8.11	30.96	30.96	30.96	83.6	83.5	83.3	6.55	6.55	6.52	2.80	2.96	2.87	3	6.00
	1:14		Middle	3.0	18.30	18.30		8.12	8.12		30.95	30.95		83.1	82.8		6.50	6.47		2.86	2.84		9	
28/1/17	-	-	Middle	-	-	-	-	-	-	-	-	-	-	-	-	-	-	-	-	-	-	-	-	-
	-		Middle	-	-	-		-	-		-	-		-	-		-	-		-	-		-	

Remarks:
Single underline denotes exceedance over Action Level.
Double underline denotes exceedance over Limit Level.

With respect to the suspension of marine construction activities under the contract during Chinese New Year Holiday, the water quality monitoring event on 28 January 2017 during ebb tide and 31 January 2017 during both flood tide and ebb tide were temporarily suspended.



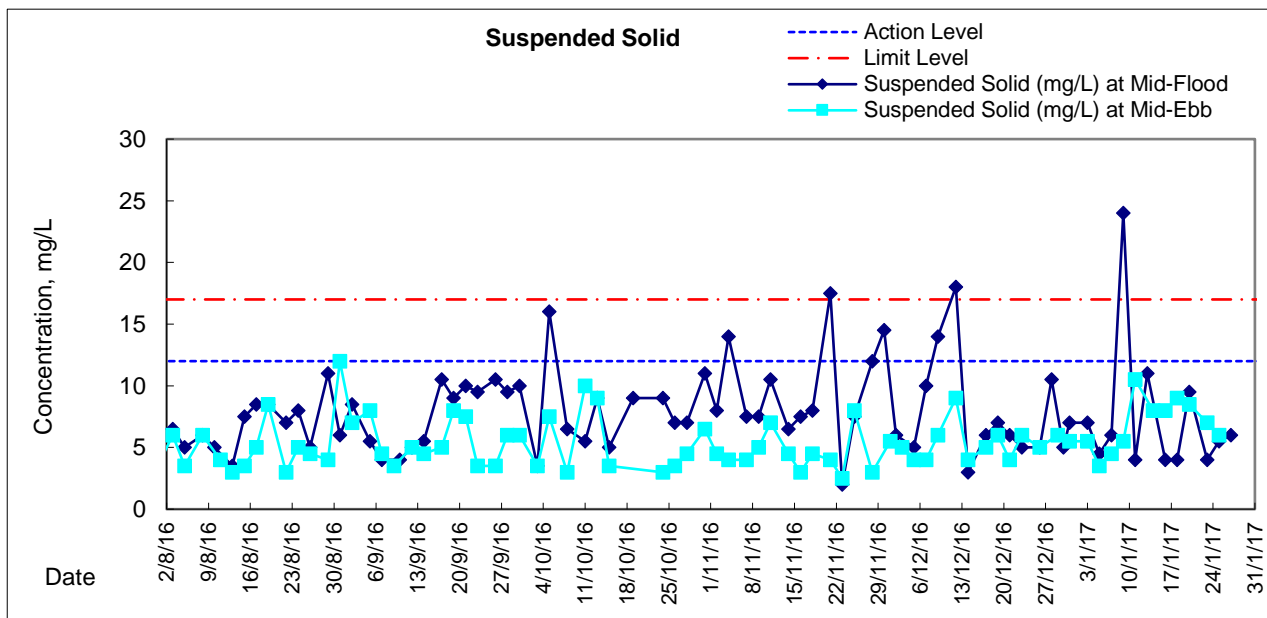
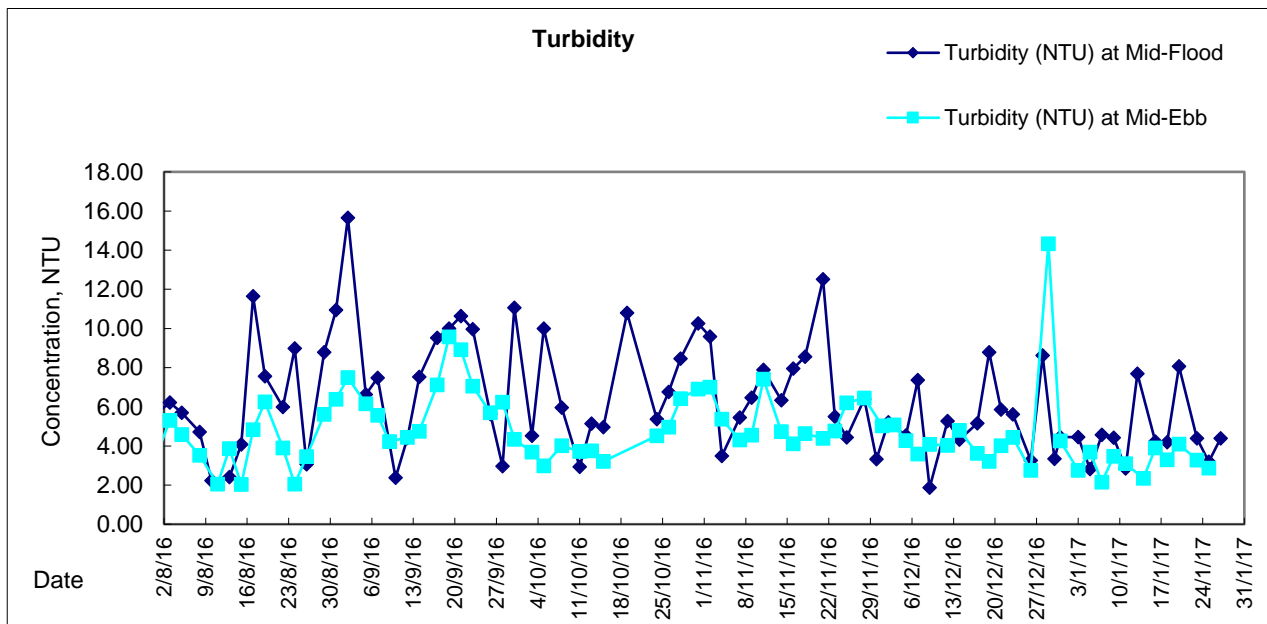
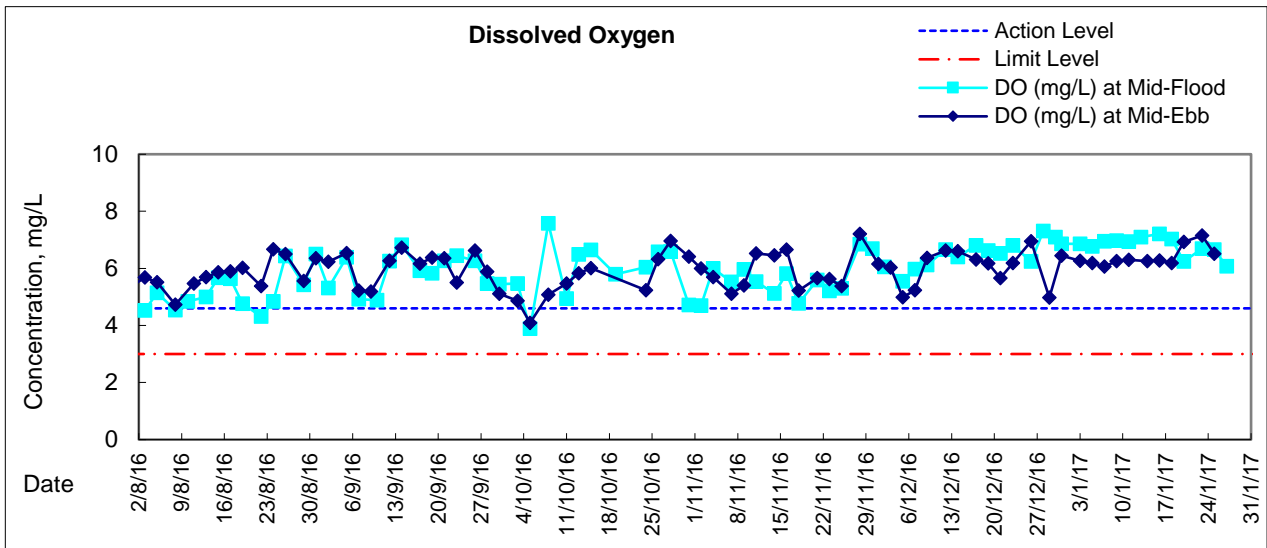
**Water Monitoring Result at Culvert J - Reference Station
Mid-Ebb Tide**

Date	Time	Weather Condition	Sampling Depth		Water Temperature			pH			Salinity		DO Saturation		DO		Turbidity		Suspended Solids					
					°C		-		ppt		%		mg/L		NTU		mg/L							
					Value	Average	Value	Average	Value	Average	Value	Average	Value	Average	Value	Average	Value	Average	Value	Average				
3/1/17	4:32	Fine	Middle	3	19.90	19.90	19.90	7.93	7.93	7.91	25.71	25.71	25.71	50.4	50.8	50.6	3.94	3.97	3.96	6.15	6.20	6.26	10	8.50
	4:33		Middle	3	19.90	19.90		7.89	7.89		25.70	25.70		50.7	50.6		3.97	3.96		6.33	6.37		7	
5/1/17	4:27	Cloudy	Middle	4	20.60	20.60	20.60	7.63	7.63	7.62	25.93	25.93	25.93	64.9	64.3	64.2	5.01	4.96	4.95	7.13	6.40	6.72	7	6.50
	4:28		Middle	4	20.60	20.60		7.60	7.60		25.92	25.92		64.1	63.5		4.92	4.90		6.74	6.62		6	
7/1/17	5:27	Cloudy	Middle	4	20.50	20.50	20.55	7.95	7.95	7.92	26.07	26.07	26.07	58.9	59.9	59.0	4.84	4.62	4.63	4.49	4.46	4.47	7	7.50
	5:28		Middle	4	20.60	20.60		7.89	7.89		26.06	26.06		59.6	57.7		4.59	4.45		4.42	4.51		8	
9/1/17	21:26	Cloudy	Middle	4	20.70	20.70	20.70	7.95	7.95	7.94	27.61	27.61	27.62	70.1	70.6	70.6	5.34	5.38	5.38	9.50	9.69	9.67	12	10.50
	21:27		Middle	4	20.70	20.70		7.92	7.92		27.62	27.62		70.9	70.9		5.40	5.40		9.73	9.75		9	
11/1/17	1:18	Cloudy	Middle	4	20.00	20.00	20.05	8.19	8.19	8.11	22.91	22.91	22.90	33.8	34.6	34.4	2.68	2.74	2.73	51.64	51.61	51.31	24	23.00
	1:19		Middle	4	20.10	20.10		8.02	8.02		22.89	22.89		34.8	34.5		2.76	2.73		51.07	50.90		22	
14/1/17	1:12	#REF!	Middle	4	18.80	18.80	18.75	7.94	7.94	7.93	25.74	25.74	25.74	74.9	75.3	74.3	6.00	6.03	5.95	8.90	8.98	8.88	17	16.50
	1:13		Middle	4	18.70	18.70		7.92	7.92		25.74	25.74		73.5	73.4		5.87	5.88		8.83	8.80		16	
16/1/17	4:51	Cloudy	Middle	3	17.70	17.70	17.65	8.07	8.07	8.06	26.69	26.69	26.69	71.6	72.1	71.8	5.83	5.87	5.84	8.64	8.75	8.65	13	13.00
	4:52		Middle	3	17.60	17.60		8.05	8.05		26.69	26.69		72.0	71.3		5.86	5.80		8.65	8.57		13	
18/1/17	5:37	Cloudy	Middle	3	19.20	19.20	19.20	8.19	8.19	8.18	22.17	22.17	22.17	79.2	79.3	79.0	6.42	6.43	6.40	8.57	8.54	8.53	8	10.00
	5:38		Middle	3	19.20	19.20		8.16	8.16		22.17	22.17		78.9	78.4		6.40	6.35		8.52	8.50		12	
20/1/17	6:47	Cloudy	Middle	3	19.00	19.00	19.05	8.19	8.19	8.21	25.66	25.66	25.65	82.3	82.7	82.2	6.55	6.58	6.54	6.66	6.64	6.63	11	10.50
	6:48		Middle	3	19.10	19.10		8.23	8.23		25.64	25.64		82.4	81.5		6.55	6.48		6.61	6.59		10	
23/1/17	21:48	Cloudy	Middle	4	18.60	18.60	18.65	8.26	8.26	8.25	25.10	25.10	25.10	79.9	80.8	80.5	6.43	6.49	6.47	11.32	11.30	11.26	7	6.50
	21:49		Middle	4	18.70	18.70		8.24	8.24		25.10	25.10		80.9	80.4		6.50	6.46		11.28	11.15		6	
25/1/17	1:20	Fine	Middle	3	18.20	18.20	18.25	8.19	8.19	8.19	25.80	25.80	25.80	72.3	71.7	71.6	5.80	5.75	5.74	5.62	5.61	5.62	11	9.50
	1:21		Middle	3	18.30	18.30		8.18	8.18		25.80	25.80		72.0	70.2		5.77	5.63		5.64	5.60		8	
28/1/17	-	-	Middle	-	-	-	-	-	-	-	-	-	-	-	-	-	-	-	-	-	-	-	-	-
	-		Middle	-	-	-		-	-		-	-		-	-		-	-		-	-		-	

Remarks:
With respect to the suspension of marine construction activities under the contract during Chinese New Year Holiday, the water quality monitoring event on 28 January 2017 during ebb tide and 31 January 2017 during both flood tide and ebb tide were temporarily suspended.
Double underline denotes exceedance over Limit Level.



Graphic Presentation of Water Quality Result of M5B - Central Cooling Water Intake Groups



The construction work during the reporting period include, roadworks, drainage works, back-filling at tunnel and reinstatement of culvert K. The weather condition during the reporting period ranges from mostly sunny to rainy. The quarterly mean of suspended solids in this reporting quarter was found to be 7.0 mg/L which was lower than ambient mean of 7.5 mg/L according to the baseline monitoring data.



Graphic Presentation of Water Quality Result of Culvert J - Reference Station

